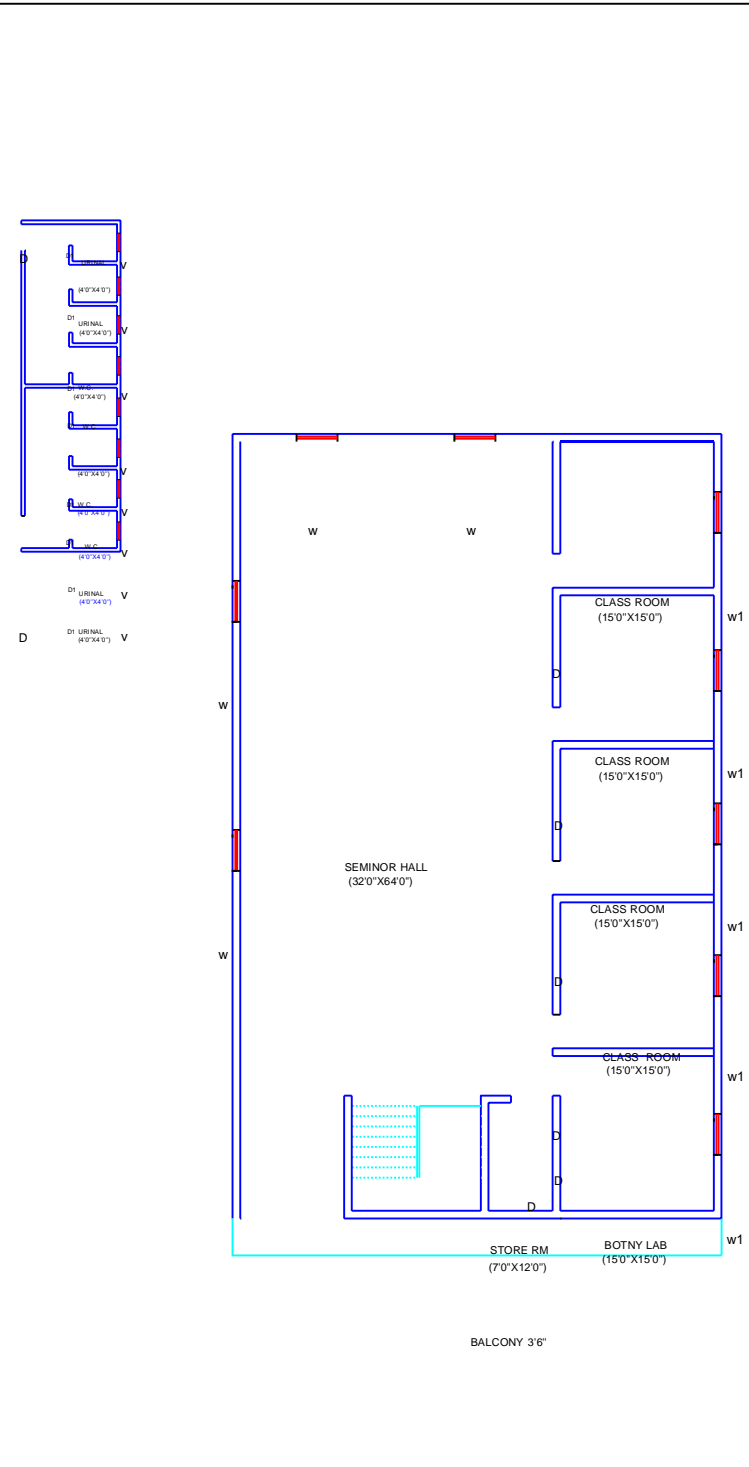
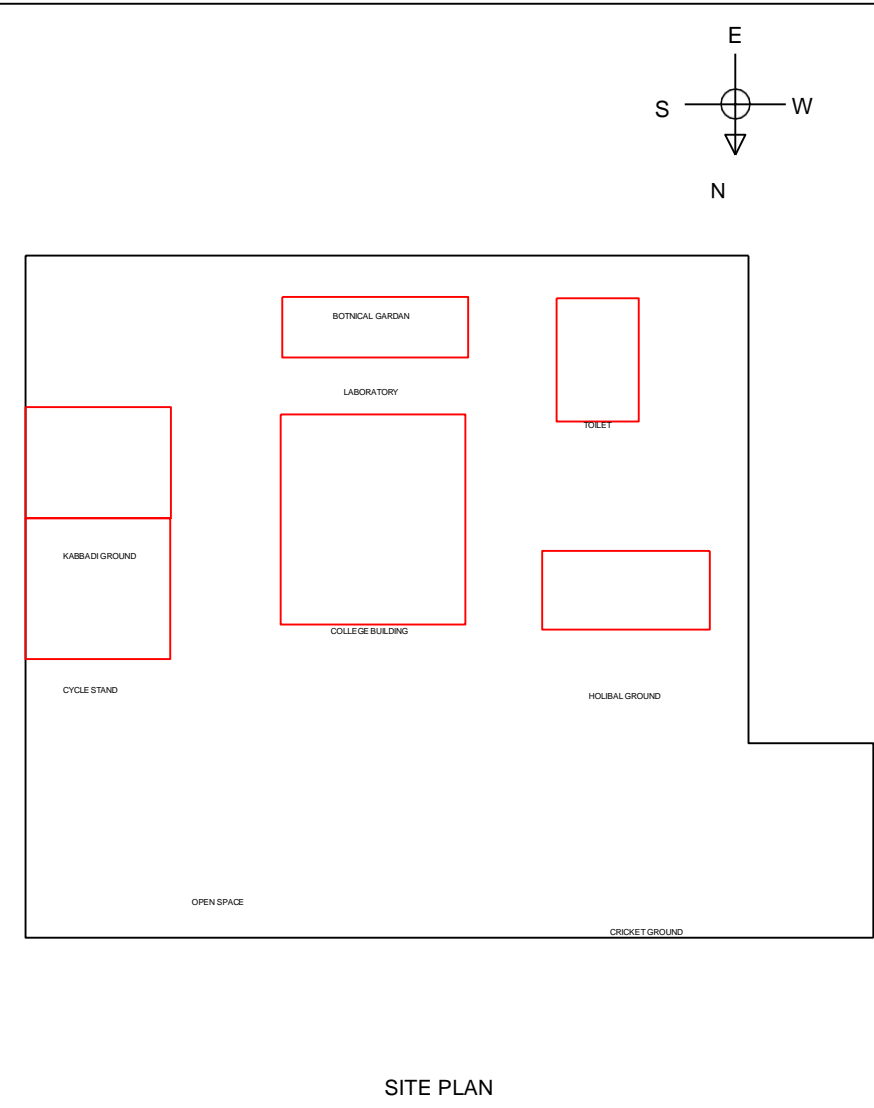


GROUND FLOOR PLAN



FIRST FLOOR PLAN



SITE PLAN

(Signature)
Principal
Manohar Bhai Patel Arts, Commerce
& Science College, Sadak Arjuni,
Dist Gondia, Pin Code - 441807

APPLICANT SIGN

(Signature)
O. G. KAPGATE
Civil Engineer
Reg. No. NPSA/09/2015
Sadak Arjuni, Dist Gondia
Mo. 9764412913

ARCH. /ENGINEERS SIGN

| SCHEDULE OF OPENING | | | | |
|---------------------|------------|------|-----------|--------------------|
| NO | NAME | TYPE | SIZE | DISCRPTION |
| 0 | SHUTTER | S | 1.53X2.1 | M.S. SHUTTER |
| 15 | DOOR | D | 1.00X2.1 | T.W. PANNELED DOOR |
| 9 | DOOR | D1 | 0.75X2.1 | CONCRETE FRAME |
| 19 | WINDOW | W | 1.5X1.2 | T.W. GLAZED WINDOW |
| 5 | WINDOW | W1 | 1.2X1.2 | T.W. GLAZED WINDOW |
| 3 | VENTILATOR | V | 0.60X0.45 | M.S. GRILL |

AREA STATEMENT
PROPOSED BUILT-UP AREA

- PRINCIPAL OFFICE = 15 X 15
- = 225 SQ.FT.
- ADMINISTRATIVE OFFICE = 15 X 15
- = 225 SQ.FT.
- STAFF ROOM = 15X15
- = 225 SQ.FT.
- IQAC ROOM = 15X15
- = 225 SQ.FT.
- LIBRSRY = 15 X 15
- = 225 SQ.FT.
- SEMINOR HALL= 32X64
- = 2048 SQ.FT.
- LADIES COMMON ROOM = 15X15
- = 225 SQ.FT.
- CHEMISTRY LAB = 12X48
- = 576 SQ.FT.
- ZOOLOGY LAB = 12X48
- =576 SQ.FT.
- BOTNY = 15X15
- =225 SQ.FT.
- CLASS ROOM =15X46
- = 690 SQ.FT.
- CLASS ROOM = 15X15
- = 225 SQ.FT.
- CRICKET GROUND = 40X300
- =1200 MTR.
- KABADDI GROUND= 10X13
- = 130 MTR.
- VOLLEY BALL GROUND = 9X18
- = 162 MTR.
- GIRLS TOILET = 9X16
- = 144 SQ.FT.
- BOYS TOILET = 9X16
- = 144 SQ.FT
- BOTANICAL GARDEN = 22000 SQ.FT.

SCALE
1) FOR PLAN = 1:100
2) FOR SITE PLAN = NOT TO SCALE

PROPOSED BUILDING PLAN OF **MONOHAR BHAI PATEL COLLEGE OF ARTS, COMMERCE & SCIENCE, LAYOUT MAP OF COLLEGE SADAK ARJUNI, HOUSE NO. 1027 TAH- SADAK ARJUNI DIST- GONDIA (M. H.)**